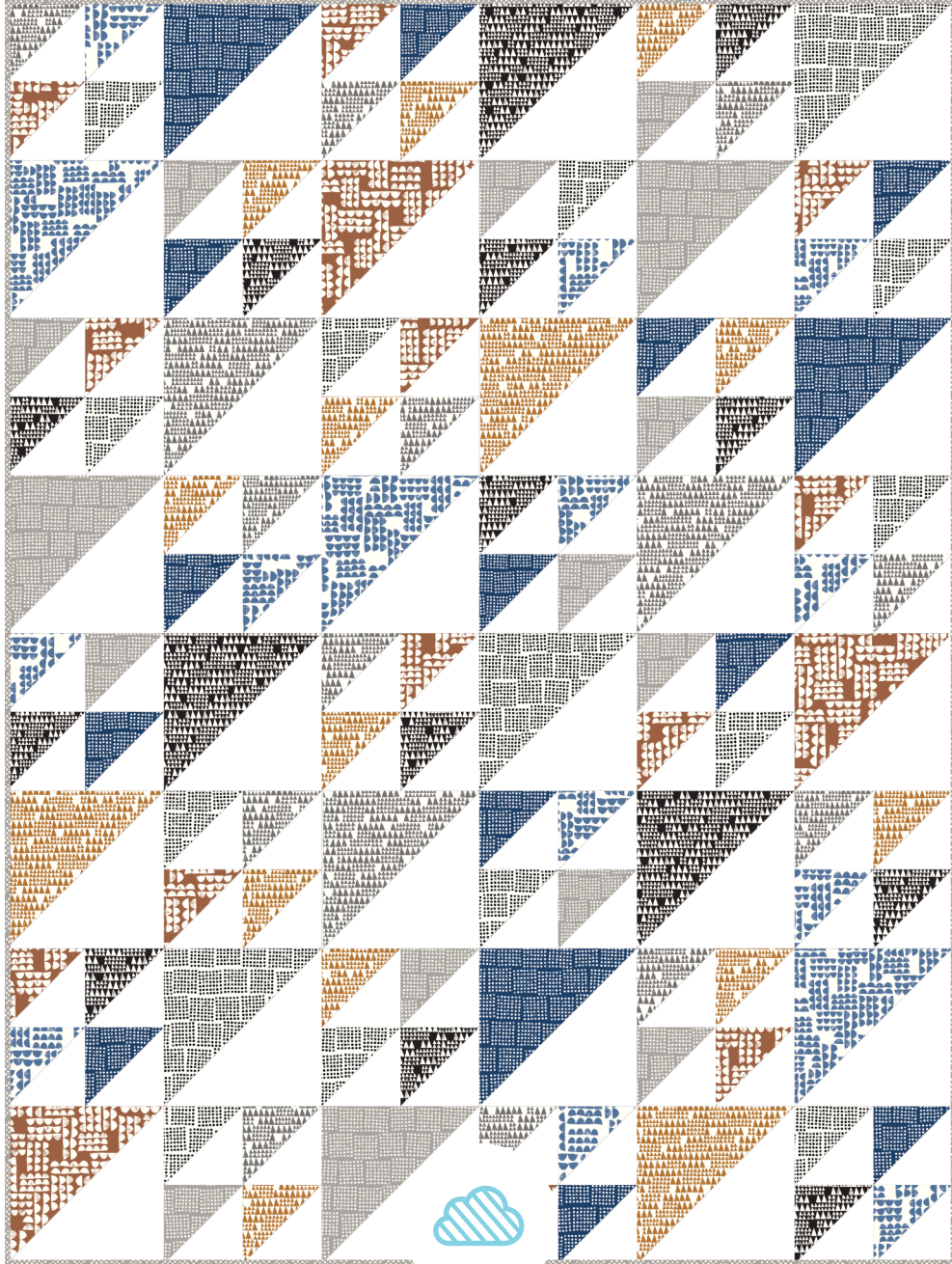


IN YOUR CORNER QUILT PROJECT

Beginner friendly!

Featuring **IMPRINT** | *Eloise Renouf*



CLOUD9
FABRICS

organic cotton. happy you. happy earth.

© CLOUD9 FABRICS 2023 | ALL RIGHTS RESERVED | CLOUD9FABRICS.COM | FOR PERSONAL USE ONLY

IN YOUR CORNER QUILT PROJECT

SIZE: 48½" X 64½"

DESIGNER: Michelle Engel

TECHNICAL EDITOR: Linda Spiridon

This project uses 8 different fabrics

See chart below for fabric quantities

2 ¼ yards background fabric

½ yd binding

4 yards backing

Note: All possible care has been taken to assure the accuracy of this pattern. We are not responsible for printing errors or the manner in which individual work varies. Please read instructions carefully before starting the construction of this quilt. If desired, wash and iron your fabrics before starting to cut.

QUILT FACE MATERIALS

Cutting dimensions include ¼" seam allowances.

HST = Half Square Triangle Block. Press seams as you go.

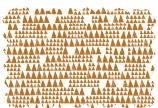
½ yard each of 8 different printed fabrics (*see chart below*)

2- 9" squares (16 total) & 6- 5" squares from each ½ yard (48 total)

2¼ yds of background fabric

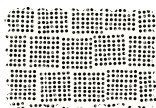
16- 9" squares & 48- 5" squares

227393



FABRIC A

227405



FABRIC B

227395



FABRIC C

227394



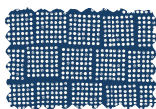
FABRIC D

227404



FABRIC E

227406



FABRIC F

227391



FABRIC G

227397



FABRIC H

Use a solid fabric that is the same color on both sides and has no pattern



BACKGROUND FABRIC

BLOCK ASSEMBLY

1. Draw a diagonal line on the back side of all background squares (*fig 1*)
2. To make HST select a 9" print fabric square and 9" background square. Lay right sides together and sew ¼" on each side of the diagonal line. (*fig 2*)
3. Cut on the diagonal line, unfold each and press seams toward darker fabric.
4. Square up block to 8½" square. *Use diagonal 45° line on the ruler to help center blocks.* (total 24 large HST blocks will be used)
5. Repeat steps 2-4 with the 5" squares and square up to 4½" squares. (total 96 small HST blocks)

fig 1

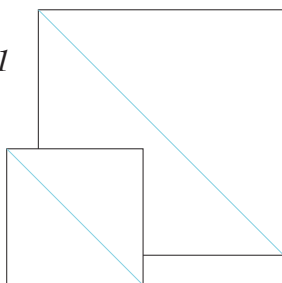
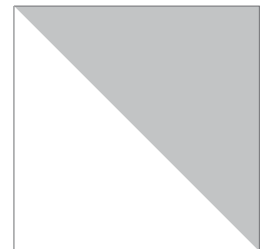
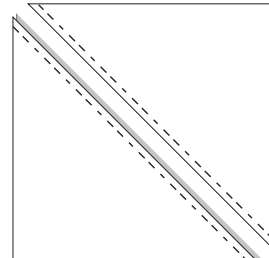
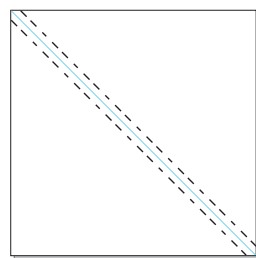
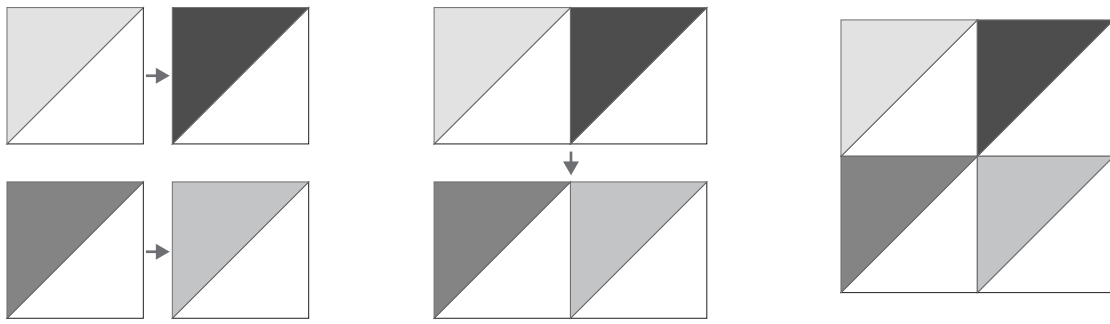


fig 2



6. Refer to the assembly diagram for fabric color placement and sew 4- 4½" HST into pairs and make a 4 patch (total 24 four patch blocks) (*fig 3*)

fig 3

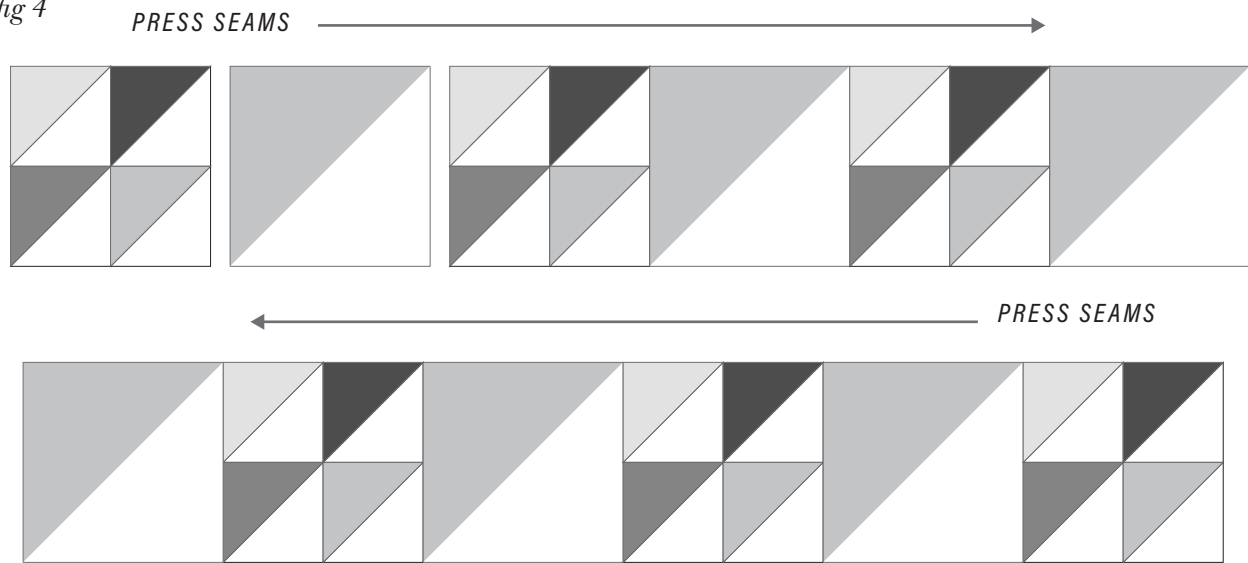


QUILT ASSEMBLY

7. Refer to the assembly diagram for fabric color placement and block direction
(or arrange however you like)

Arrange blocks in eight horizontal rows of six blocks each. Sew the blocks together in rows. Press block seam allowances in one direction for each row, alternating the direction from row to row (fig 4)

fig 4



8. Sew the rows together to complete the quilt top
9. Layer the backing, batting and quilt top
10. Baste, quilt and bind

QUILT LAYOUT DIAGRAM

