

free project | EAST WEST | lap quilt 40" x 48"

**DESIGNED BY MELANIE SHORTMAN TUASON**



# East West by Melanie Shortman Tuazon

QUILT SIZE: approximately 40" x 48"

## MATERIALS

## YARDS

13 prints (we used Koi)	FQ each
Linen background	1 3/4 yd
Binding	1/2 yd
Backing	1 1/2 yd

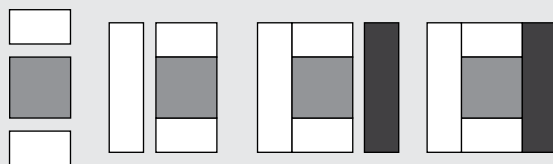
## ASSEMBLING THE BLOCKS

Fig. 1

1a

1b

1c



ASSEMBLY (all seam allowances 1/4")

*Note: this is the type of project where you can pick and choose which prints you'd like to pair up. See the front of this project sheet for suggested pairings.*

- ① Sew a 4.5" x 4.5" light print square to two 2.5" x 4.5" linen pieces (Fig. 1a)
- ② For a right orientation (Fig. 2a) sew a 2.5" x 8.5" linen to the left side (Fig. 1b) then sew the 2.5" x 8.5" dark print to the right side.
- ③ For a left orientation (Fig. 2b) sew the dark strip to the left and the linen strip to the right.
- ④ To assemble the quilt, sew the right oriented blocks beginning the row with the 8.5" x 8.5" linen block (Fig. 2a)
- ⑤ For the left oriented blocks, begin the row with the pieced block, ending with a 8.5" x 8.5" linen square.
- ⑥ Continue as shown in Fig. w 2 until all rows are complete then sew the rows together.
- ⑦ Layer the quilt back, batting, and the quilt top. Baste the layers together. Quilt as desired, removing the basting as you go. Bind to finish!

Fig. 2 **ASSEMBLING THE QUILT TOP**

Fig. 2a (right orientation)

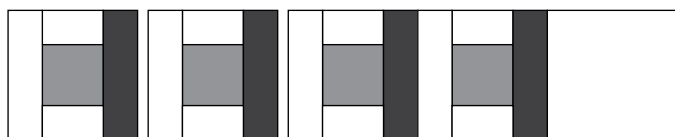
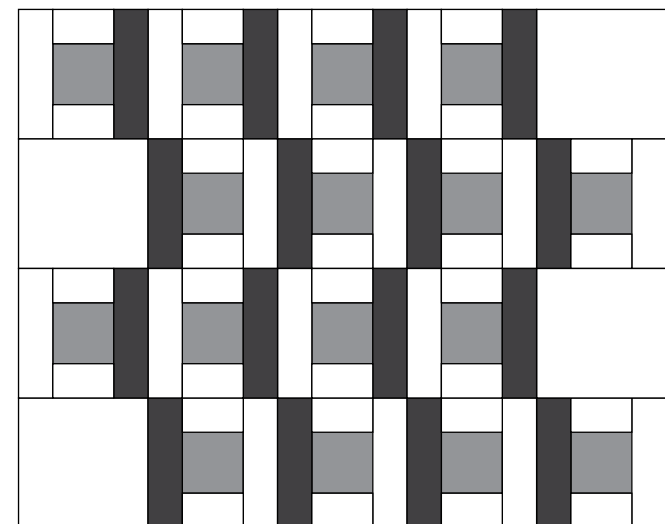
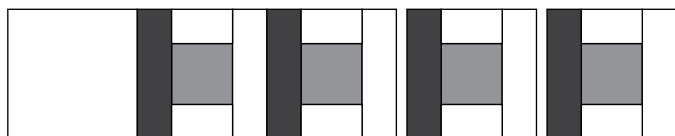


Fig. 2b (left orientation)



Learn more about the designer: **Melanie Shortman Tuazon**  
[www.about.me/melintheattic](http://www.about.me/melintheattic)  
[www.melintheattic.com](http://www.melintheattic.com)