

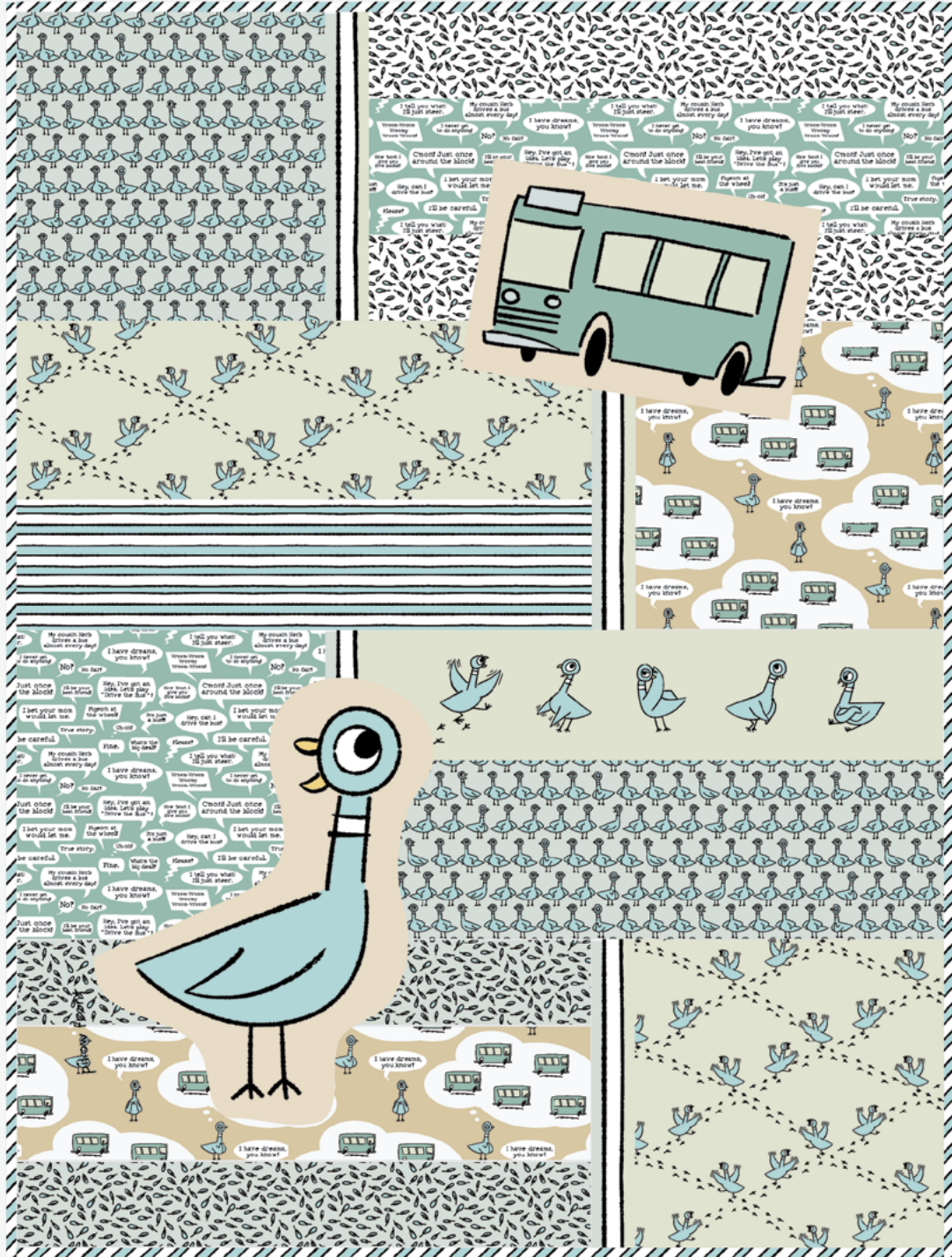
free project | PIGEON QUILT | throw 36" x 48"

Don't Let the Pigeon Drive the Bus!



words and pictures by mo willems

DESIGNED BY LINDA SPIRIDON

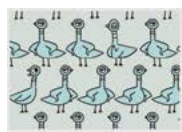


Don't Let the Pigeon Drive the Bus! quilt

by Linda Spiridon

QUILT SIZE: 36" x 48"

Fabric requirements



1/2 yd
cut 1 - 12.5" x 12.5" (A)
cut 1 7.5 x 23.25" (B)



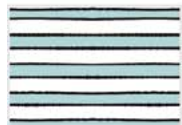
1/2 yd
cut 1 - 12.5" x 12.5" (C)
cut 1 6.5 x 23.25" (D)



1/2 yd
cut 1 - 12.5" x 12.5" (E)
cut 1 6.5 x 23.25" (F)



1/2 yd
cut 1 - 12.5" x 12.5" (G)
cut 1 7.5 x 23.25" (H)



3/4 yd
cut 1 - 5.25" x 23.25" (I)
binding = 2.25" strips cut on bias,
totalling 200" long when pieced.



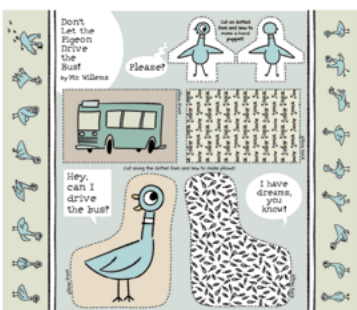
1/4 yd
cut 2 - 3.5" x 23.5" (J)



1/4 yd
cut 2 - 3.5" x 23.5" (K)



1 1/2 yd (backing)
42" w x 54" l



1 project panel
- cut 1 Pigeon strip 5.5 x 23.25" (L)
- cut the 2 black and white stripes 1.75" CEN-
TERED then subcut to equal 4pc 1.75" x 12.5" (M)

Optional Appliqués - cut out large pigeon and

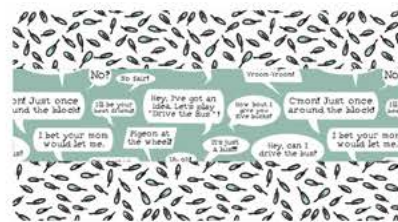
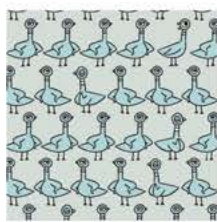
Directions

Use 1/4" seam allowance. Press after addition of each piece.

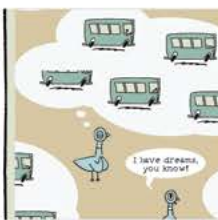
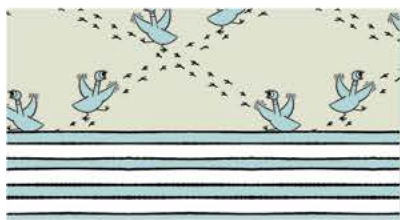
1 Sew sections together in order.

2 Optional appliqué: Cut fusible web slightly smaller than the appliqué. According to manufacturer's instruction, iron the fusible web to the wrong side of appliqué. Cut out the appliqué to the desired size, decide on placement and iron to quilt top. Machine appliqué with desired stitch.

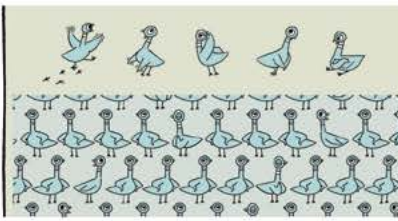
3 Back and bind using your preferred methods.



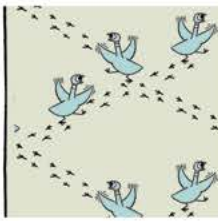
Section I
1. Sew M to right side of A
2. Sew J to F
3. Sew JF to J
4. Sew AM to JFJ



Section II
1. Sew H to I
2. Sew M to left side of C
3. Sew HI to MC



Section III
1. Sew M to right side of E
2. Sew L to B
3. Sew EM to LB



Section IV
1. Sew K to D
2. Sew KD to K
3. Sew M to left side of G
4. Sew KDK to MG