



**Materials:** *Note: this is to make a bag that is approx 11" w x 13" h and will accommodate small shoes up to size 9. Enlarge proportions accordingly to make bigger.*

2- 4.5" w x 14" h NARROW FACING print

2--7.25" w x 14" h WIDE FACING print

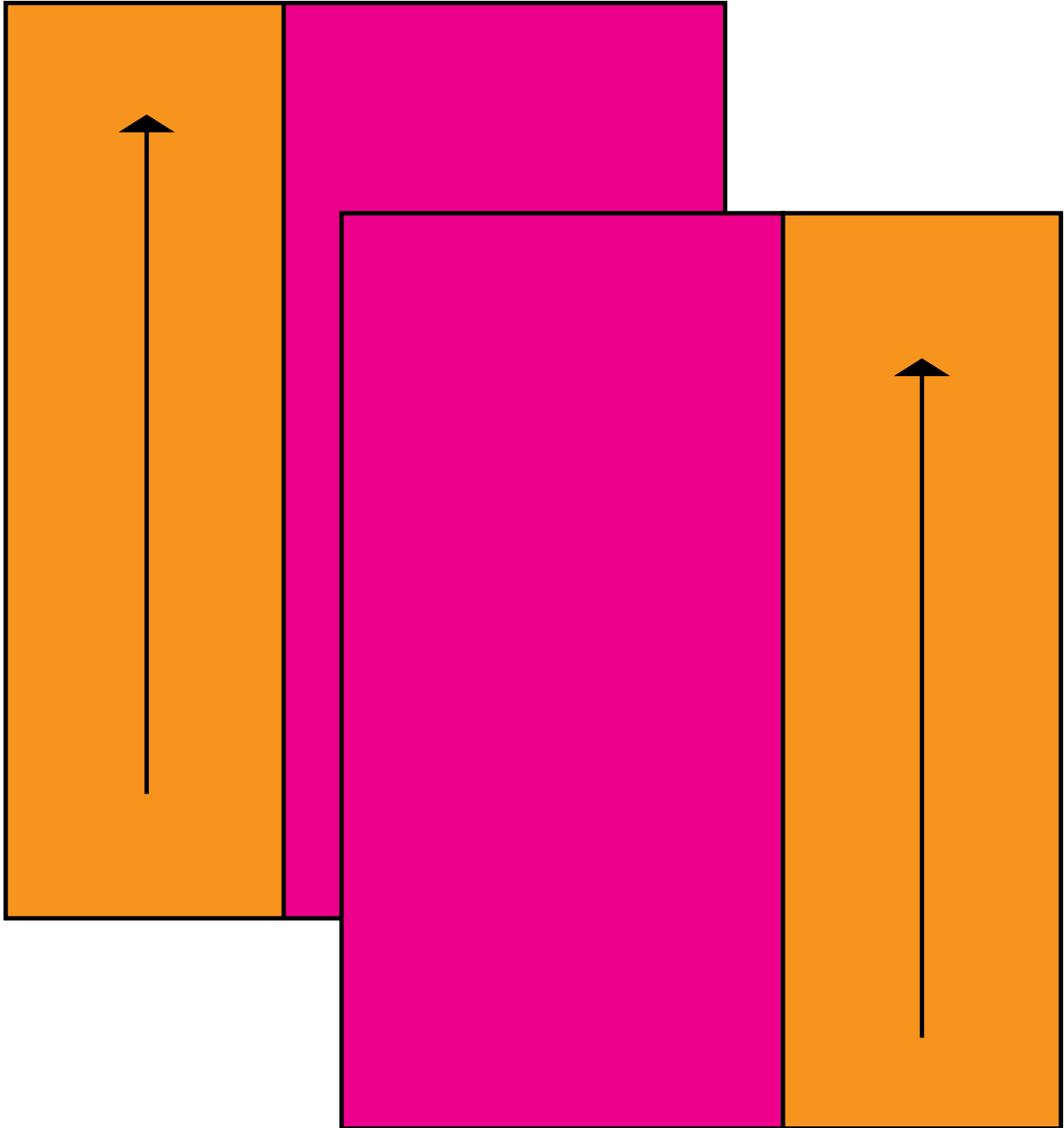
2- 11.5" w x 14" h for LINING. *Note: we used a solid*

2- 24" lengths of narrow drawstring cording

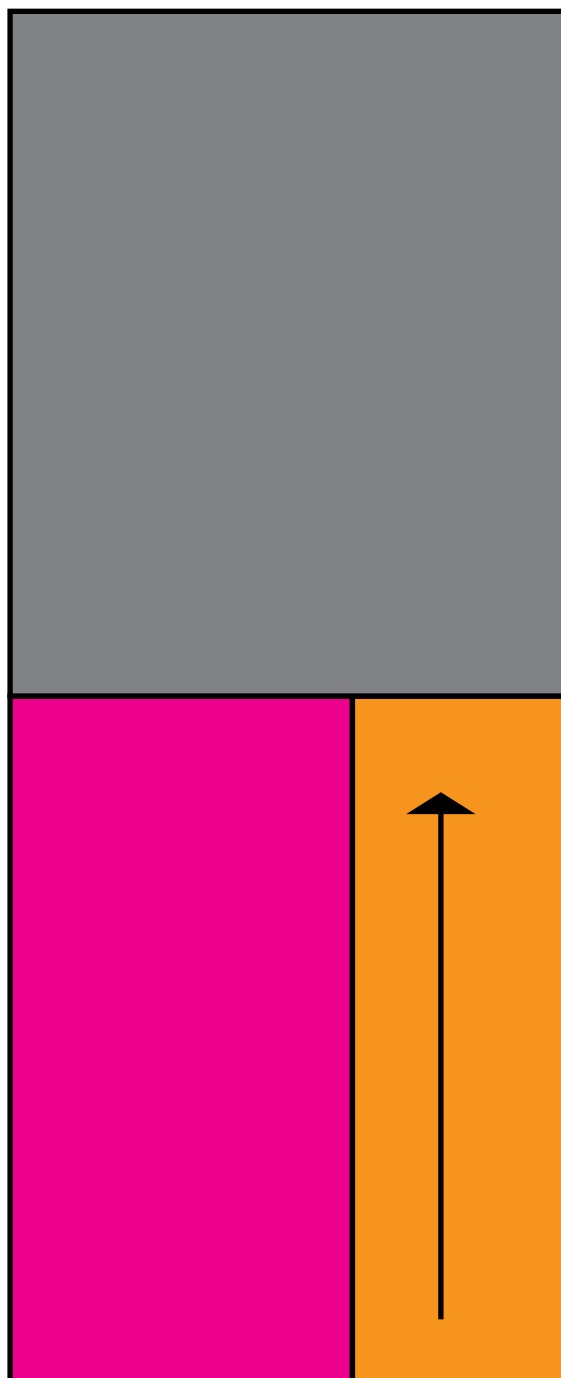
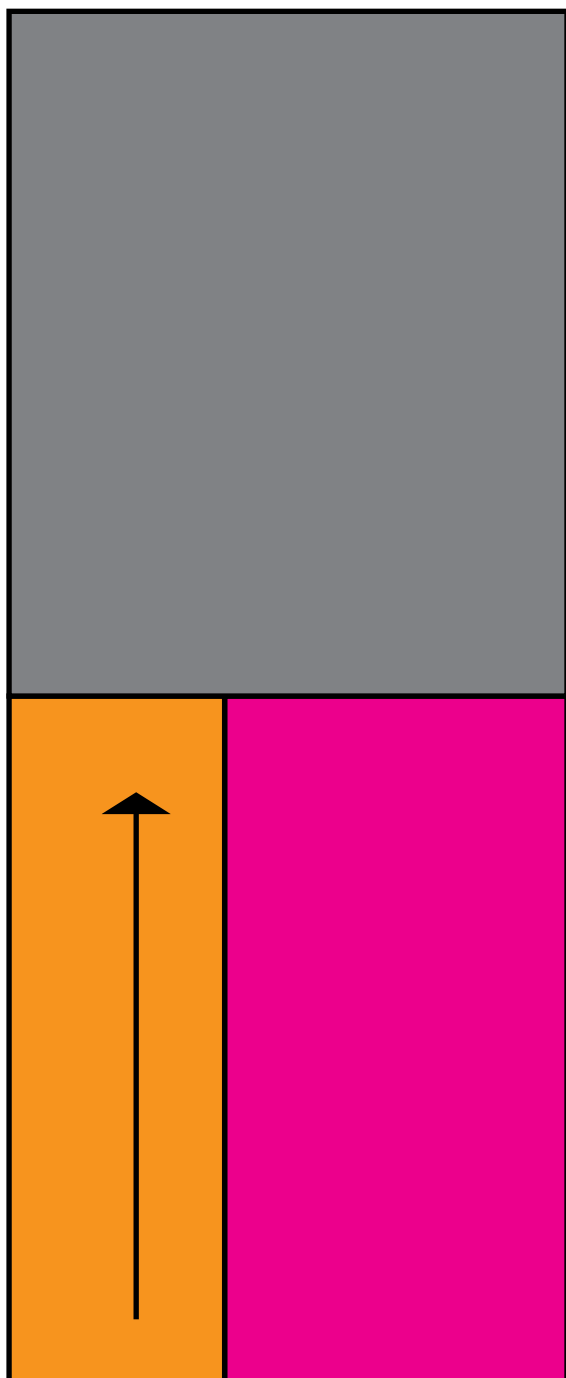
Other items: pins, safety pin or drawstring threader, fabric marker, point turner, scissors or rotary cutter, ruler, iron.

All seams allowances are 1/4"

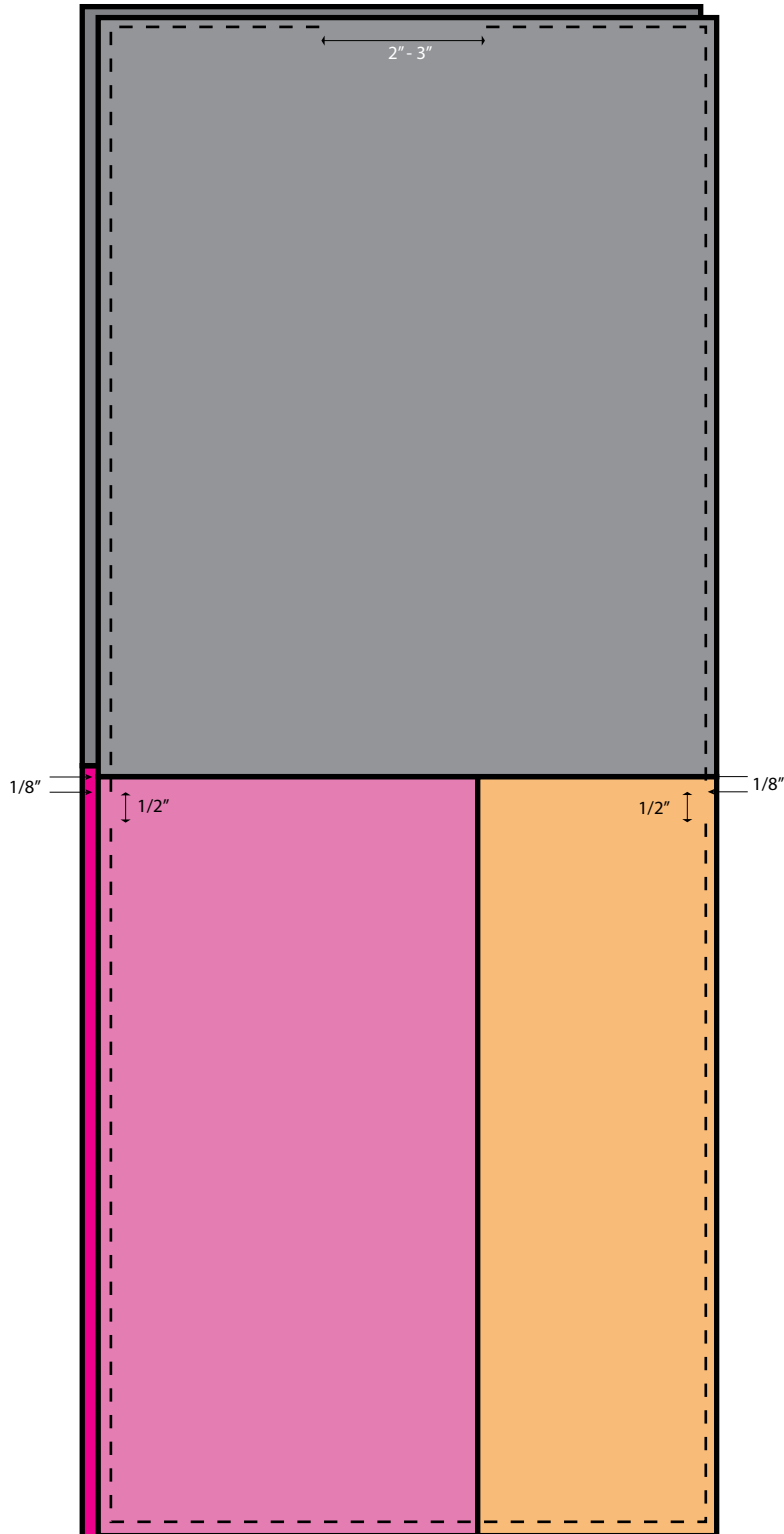
1. Sew one NARROW FACING to a WIDE FACING on the right. Sew the other on the left.



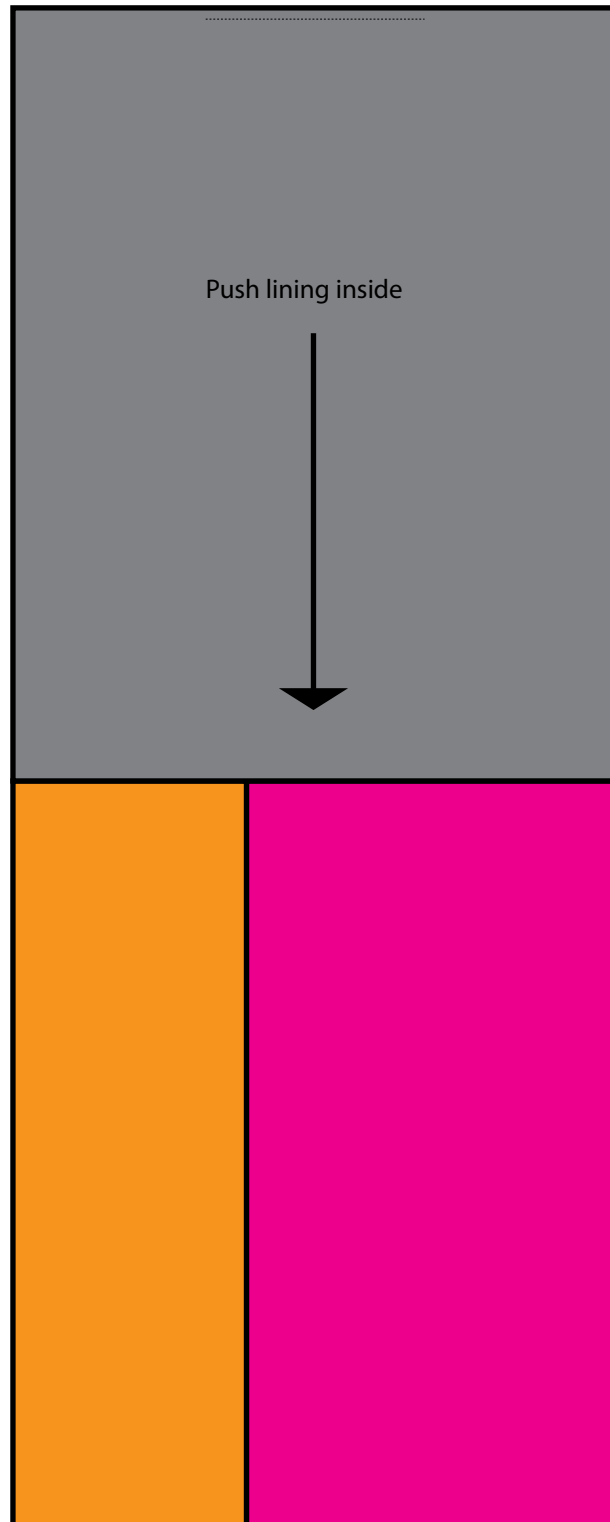
2. Sew a LINING to the TOP of each FACING.



3. Stitch around perimeter backtacking at the noted openings.



4. Turn inside out through the 2-3" opening in the lining. Gently poke out the corners and press the edges, including the opening, which should be tucked into the lining. Topstitch scant  $\frac{1}{8}$ " to close the opening. Push the lining into the bag and press again.



5. To thread the drawstring, start on one side, thread along the back, enter out the other side and then thread along the front. Tie ends into a single knot. Repeat in the reverse direction so that other loose ends are on the other side of bag. To close bag, pull on each tied end.

