



CLOUD9

FABRICS

FREE PROJECT SHEET **EXCLAMATION! QUILT** | SIZE 46" x 61"



DESIGN **MICHELLE ENGEL BENCSKO**

TECHNICAL EDITOR **CINDY WEINS**

© CLOUD9 FABRICS 2015 | ALL RIGHTS RESERVED

CLOUD9FABRICS.COM

EXCLAMATION! QUILT FEATURING TYPOGRAPHY BY JESSICA JONES

Note: This pattern uses Foundation Paper Piecing. You will need 36 paper pieced templates copied on to paper (special foundation paper can be used if desired) to complete the blocks. Print template at 100% (be sure that print settings are not set to "scale" or to "zoom"). Use 1" test square to ensure correct size of template.

Fat eighths of each: Helvetica [Black & Burgundy], Lorem Ipsum [Turquoise, Teal, Burgundy & Black], Script [Turquoise, Lavender, Khaki, Black], Wood Type [Teal & Black], Ampersand [Turquoise & Lavender], Glyph [Teal & Burgundy], Specimen [Lavender & Black], Cirrus Solids [Midnight, Rain & Iris]
 2 yards Cirrus Solids [Limestone] for Background 3/8 yard Helvetica [Black] for Binding
 3 yards Specimen [Lavender] for Backing

Note: All possible care has been taken to assure the accuracy of this pattern. We are not responsible for printing errors or the manner in which individual work varies. Please read instructions carefully before starting the construction of this quilt. If desired, wash and iron your fabrics before starting to cut.

CUTTING DIRECTIONS

Cutting dimensions include 1/4" seam allowances.

From Helvetica [Black], Lorem Ipsum [Turquoise & Black], Script [Lavender & Khaki], Woodtype [Black]:

- 1- 2½" x 2½" square
- 1- 3½" x 4½" rectangle
- 1- 9" x 5" rectangle

From Helvetica [Burgundy], Lorem Ipsum [Teal & Burgundy], Script [Turquoise & Black], Woodtype [Teal], Ampersand [Turquoise & Lavender], Glyph [Teal & Burgundy], Specimen [Lavender & Black]:

- 2- 2½" x 2½" squares

2- 3½" x 4½" rectangles

2- 9" x 5" rectangles

From Limestone:

- 5- 1½" x WOF strips *subcut into*
 - 72- 1½" x 2½" rectangles
- 5- 1½" x WOF strips *subcut into*
 - 36- 1½" x 4½" rectangles
- 18- 1¾" x WOF strips *subcut into*
 - 72- 1¾" x 9" rectangles
- 11- 1½" x WOF strips *subcut into*
 - 32- 1½" x 14½" rectangles
- 32- 1½" x 14½"
- 10- 1½" x WOF strips

ASSEMBLY DIRECTIONS

BLOCK ASSEMBLY

Set sewing stitch length to a smaller stitch (1.5 - 1.8). Use 90/14 needle and an open toe or applique foot.

1. Place center fabric (print or colored Cirrus Solids fabric) behind the foundation paper *with the wrong side of the fabric against the unprinted side of the paper*. Pin fabric to the paper. [fig 1]
2. Place a 1¾" x 9" Limestone rectangle at space 2 on unprinted side of foundation paper. Flip the fabric back over the #1 space so both fabrics are right sides together. The edge of the fabric should extend ¼" over the stitching line in space 2 to allow for seam allowance. (Hold template up to the light to ensure ¼" overhang of fabric.) [fig 2]
3. Hold or pin in place, turn the foundation paper over to the printed side and sew on the line between spaces 1 and 2, beginning and ending a few stitches beyond the line. Clip threads, trim seam allowance to ¼" taking care not to cut the paper. Press with dry iron. [fig 3] (If you need additional assistance with paper piecing concept, there are several great paper piecing sites available online.)
4. Repeat steps 2 & 3 with a 1¾" x 9" Limestone rectangle in space 3. [fig 4] Make 36 total using print & Cirrus Solids fabrics for the centers.
5. Trim the paper pieced blocks. Lay the paper side up on the mat, align ruler with the outside edge of the ¼" seam allowance and trim. Do not remove paper until the quilt is pieced.
6. Sew a 1½" x 2½" Limestone rectangle to a 2½" x 2½" print square. Sew a 1½" x 2½" Limestone

rectangle to other side of print square. [fig 5] Make 36 units using remaining 1½" x 2½" Limestone rectangles and 2½" x 2½" print and Cirrus Solids squares.

7. Attach all paper pieced blocks and blocks from Step 6 to either sides of 1½" x 4½" Limestone pieces making sure to match prints. [fig 6]

8. Attach 3½" x 4½" print and Cirrus Solids rectangles to top of pieced blocks from Step 7 noting different directions of the fabric. [fig 7]

ASSEMBLING THE BLOCK

9. Follow the **BLOCK DIAGRAM** for placement. Sew 3 exclamation point blocks together with two 1½" x 14½" Limestone strips in between. The center exclamation point should be flipped as in **BLOCK DIAGRAM**. Make 12 blocks. [fig 8]

QUILT ASSEMBLY

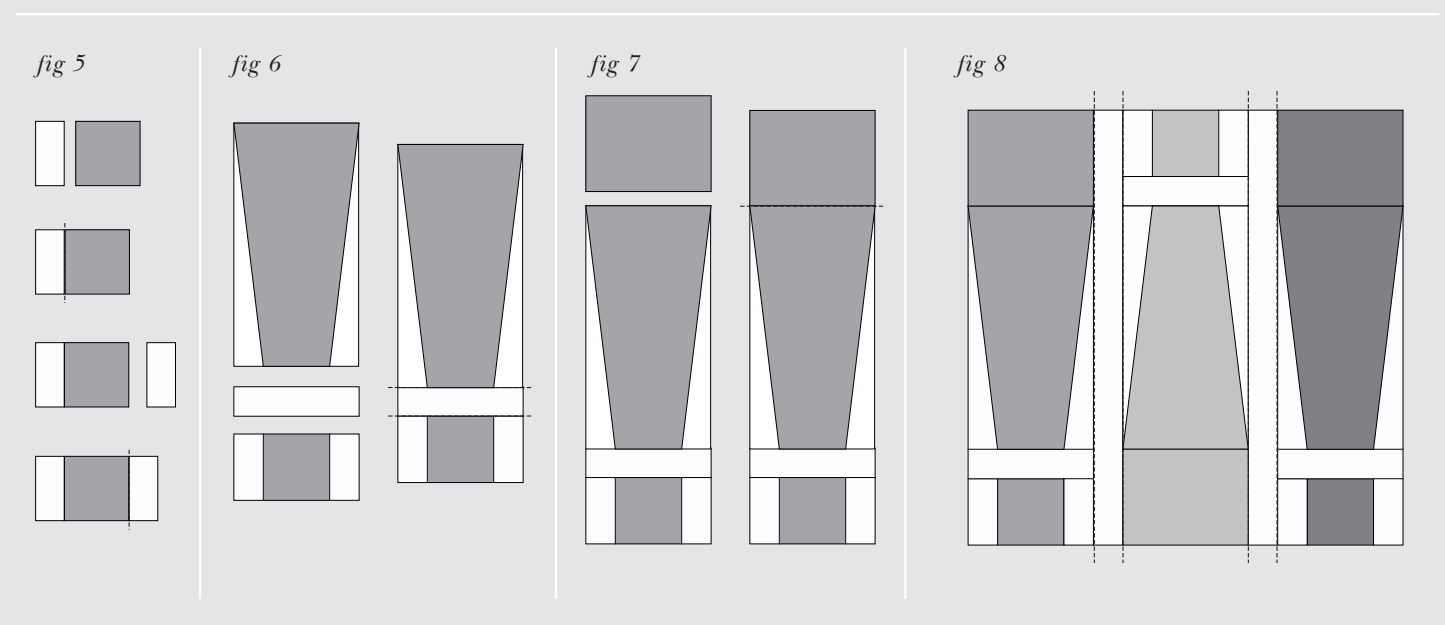
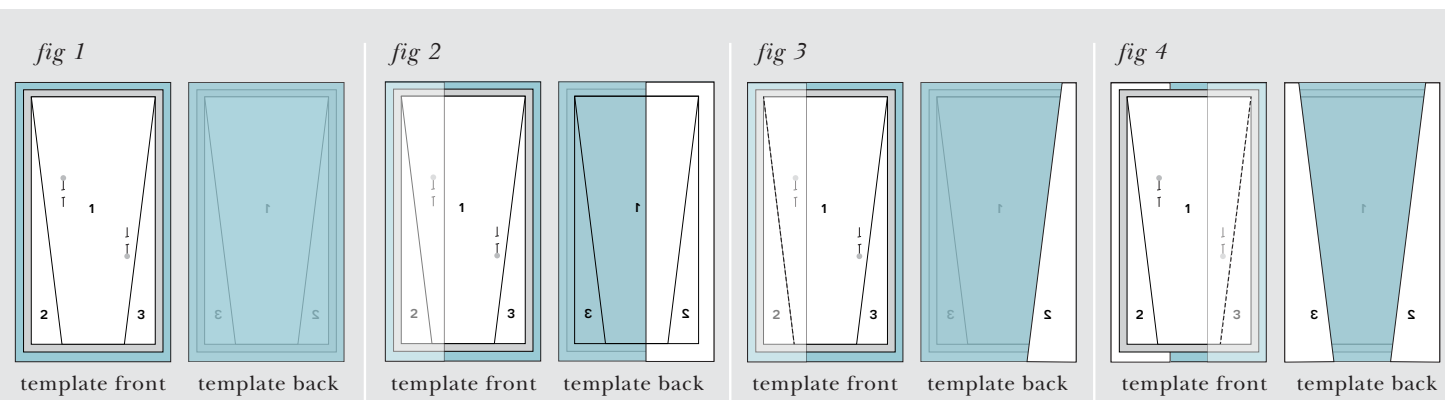
10. Referring to **QUILT DIAGRAM**, to make rows, sew three blocks together, turning blocks to make design, with two 1½" x 14½" Limestone strips in between. Make four rows.

11. Piece as necessary to make 5 strips measuring 1½" x 46½"; sew one to top and to bottom of quilt top, and one strip between each row of blocks.

12. Piece remaining strips as necessary to make 2 strips measuring 1½" x 61½"; sew one strip to each long side of quilt top.

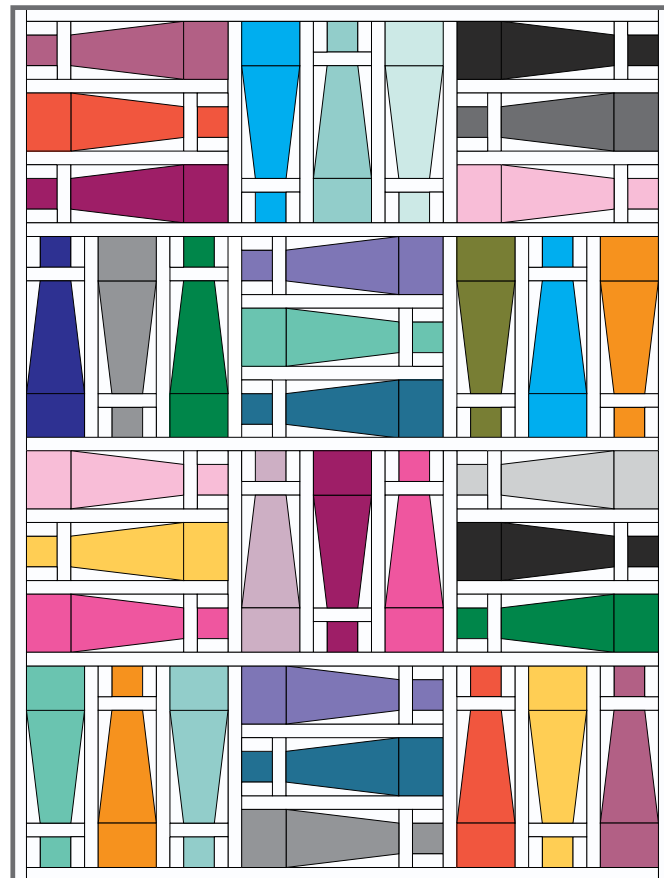
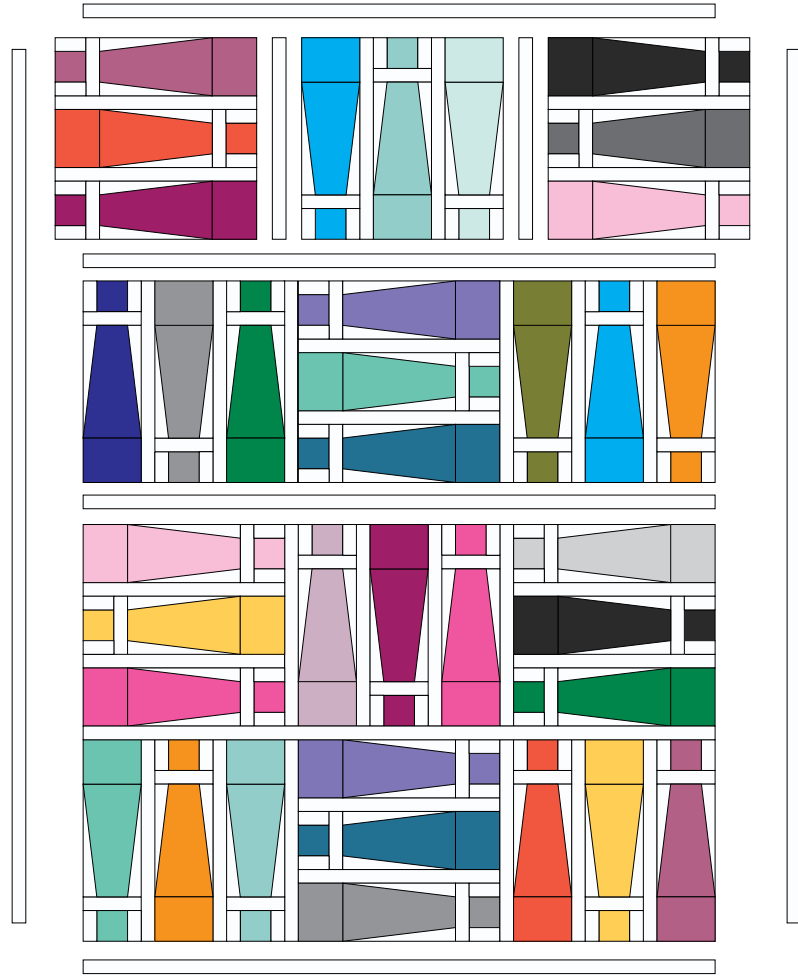
13. Layer the quilt top, batting, and backing. Baste, quilt, and bind.

DIAGRAMS

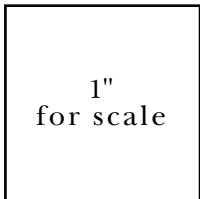
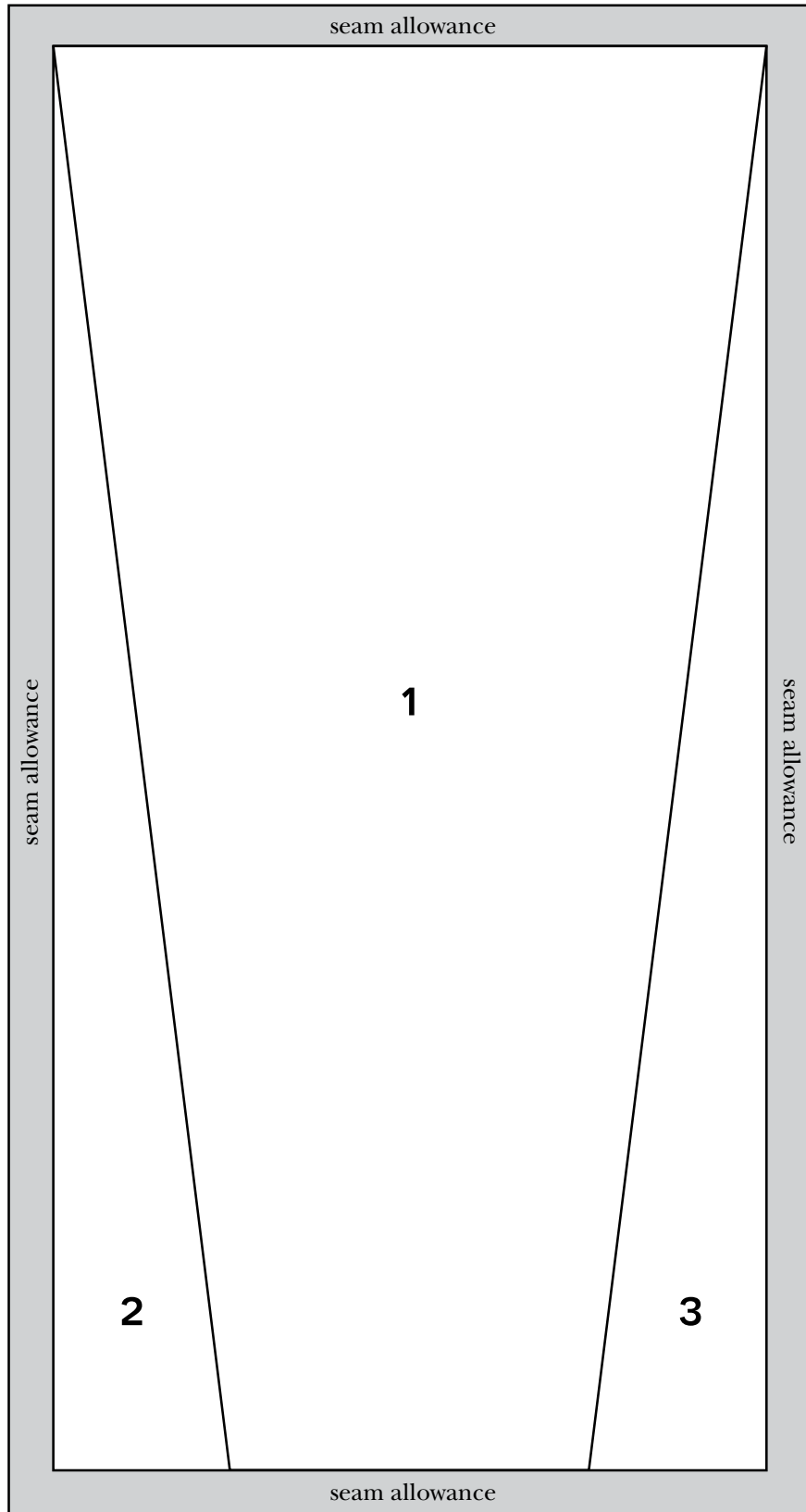


QUILT DIAGRAM

- Helvetica [Black]
- Helvetica [Burgundy]
- Lorem Ipsum [Teal]
- Lorem Ipsum [Burgundy]
- Lorem Ipsum [Black]
- Lorem Ipsum [Turquoise]
- Script [Turquoise]
- Script [Lavender]
- Script [Khaki]
- Script [Black]
- Wood Type [Teal]
- Wood Type [Black]
- Specimen [Lavender]
- Specimen [Black]
- Ampersand [Turquoise]
- Ampersand [Lavender]
- Glyph [Teal]
- Glyph [Burgundy]
- Limestone
- Iris
- Rain
- Midnight



TEMPLATE



Print template at 100%